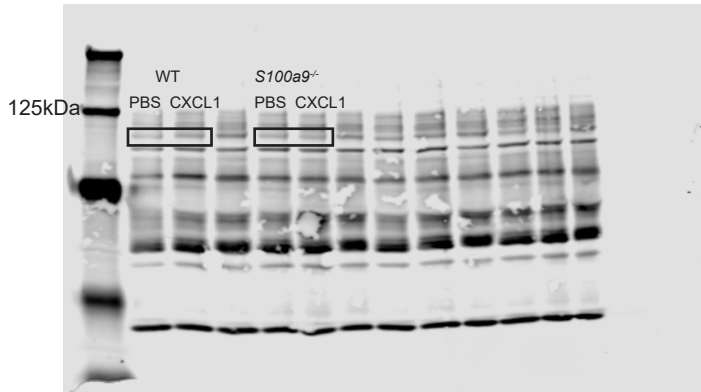
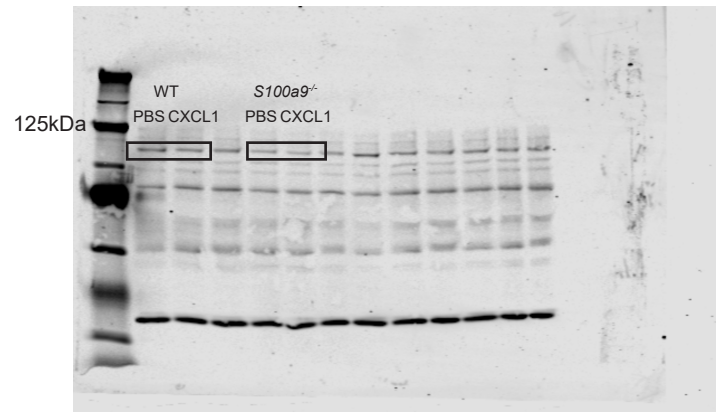


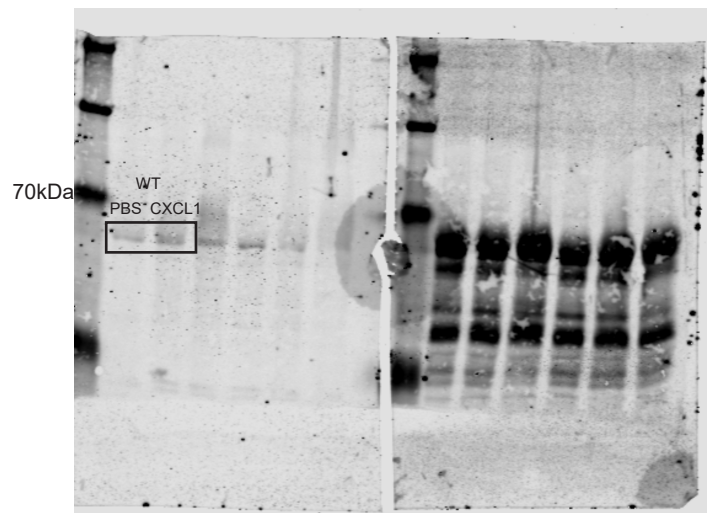
p-Pyk2



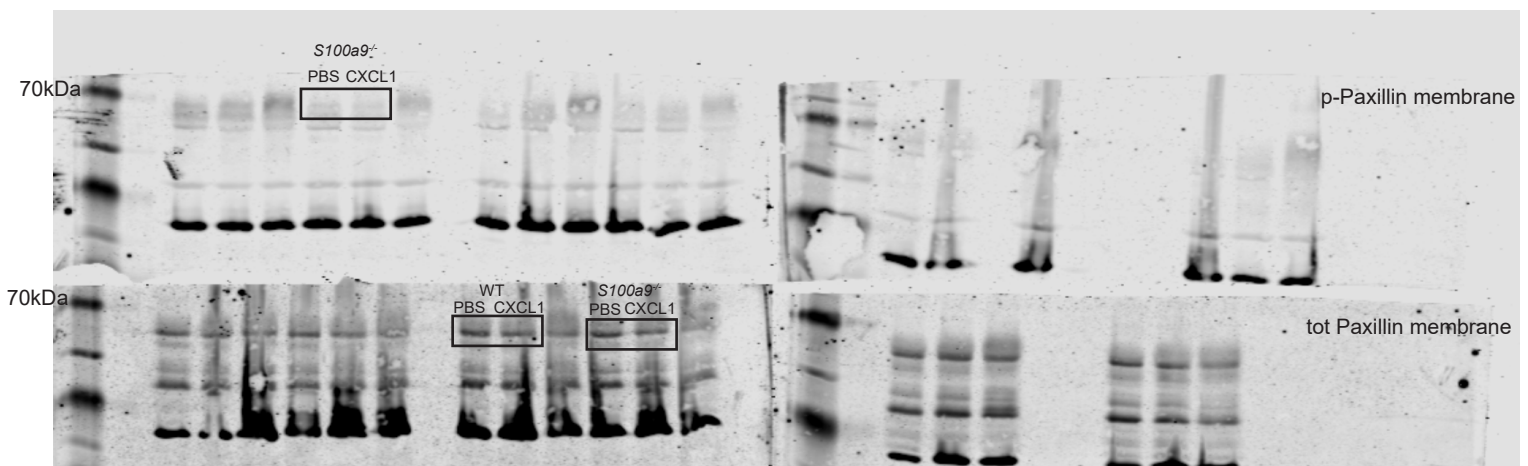
tot Pyk2



p-Paxillin



p-Paxillin + tot Paxillin



**Figure 3-source data 1.** Original Membranes corresponding to Figure 3, panel H and I. Paxillin, p-Paxillin, Pyk2 and p-Pyk2 membranes are depicted and representative blots where then cropped and edited. Lowest membranes were cut before the staining to save staining solution and fit more membranes at the same time. GAPDH was always employed as an internal control. Chamaleon Duo Pre-stained Protein Ladder was used as molecular weight marker.